



Ville de Lausanne

Bureau lausannois pour
les immigrés (BLI)

WELCOME



Living in Lausanne A practical guide



Publisher: Ville de Lausanne, Bureau lausannois
pour les immigrés (BLI) in cooperation with Info cité

Design: alafolie.ch

Illustrations: Alexandre Pointet

Cover photo: © Schweiz Tourismus / Giglio Pasqua

Printing: PCL Presses Centrales SA

June 2023, 8th edition

With support from:



Contents

Welcome to Lausanne	4
Lausanne in brief	6
Arriving in Lausanne: what to do first?	8
“Welcome to Lausanne” services	9
Your migration, integration and anti-racism specialists	11
Information and contact details (by topic)	
– Residence permits	14
– Accommodation	16
– Work	20
– French classes and training courses	23
– Schools	25
– Family	28
– Insurance	31
– Health	34
– Transport	38
– Finance, tax and telecommunications	42
– Leisure	45
– Life as a citizen	47
Map of Lausanne	50

Keys to pictograms

 Information in several languages

 Find on map (p. 50)

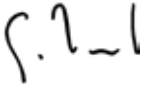
Welcome to Lausanne

Lausanne: an inclusive city

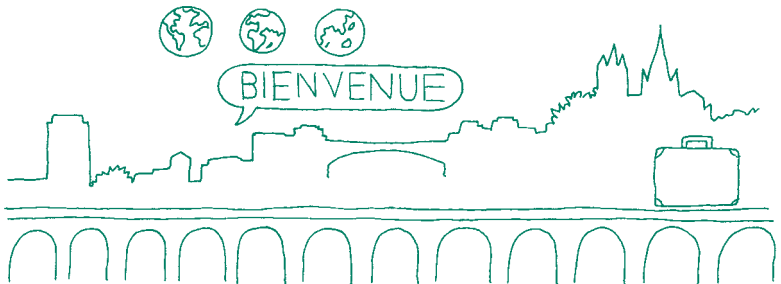
Managing a city such as Lausanne is about trying to find the right balance between stability and development, and seeking to reconcile sometimes diverging interests at all times. Above all, it is about supporting as harmonious a relationship as possible between the men and women who live here, and all its various communities. These questions are especially important in Lausanne as a city of almost 150,000 residents, 42% of whom do not have a Swiss passport.

Such cultural and social diversity is an important opportunity for sharing and mutual enrichment. It expands our horizons. It teaches us to know and respect each other. But it can also be a weakness, if we fail to integrate every person and ensure respect for everybody's culture.

If Lausanne is a success story and an example of openness and diversity, it is largely thanks to the efforts of the Lausanne Office for Immigrants (Bureau lausannois pour les immigrés - BLI) and its partners. Their day-to-day work helps make Lausanne an inclusive, welcoming city and a pleasant place to live for everyone. This brochure is just one example.



Grégoire Junod, Mayor of Lausanne



Living in Lausanne and feeling at home here

Lausanne is undoubtedly a cosmopolitan city, with 160 nationalities living alongside each other. Meeting other people, sharing ideas and talking helps us to build relationships and get to know each other better. This is the key to feeling at home in the place where we live, work, study and engage in sporting, cultural or leisure activities. That's what being part of our city is about. That's what living in Lausanne is about.

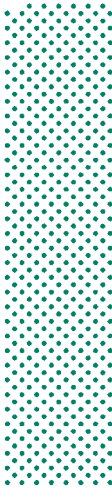
The City of Lausanne and its partners work daily to ensure there is a place for everyone and that we are all treated equally, regardless of our background, age or gender. The brochure "Living in Lausanne: a practical guide" reflects this commitment. It plays a part in making Lausanne a city that is accessible to all its residents and contains all kinds of practical information, expressed in simple language, on every aspect of daily life, from accommodation to work, schools, finance, leisure and training. It is designed to help people who have just arrived in Lausanne, those who have lived here for just a few months or much longer, and anyone who is interested in our city and its living environment.

This brochure is the result of close cooperation between the Lausanne Office for Immigrants (Bureau lausannois pour les immigrés - BLI), the city's various administrative departments and the many associations and public bodies working in the Lausanne region. I would like to express my heartfelt thanks for their contributions.

I hope you enjoy discovering all the many things our city has to offer!

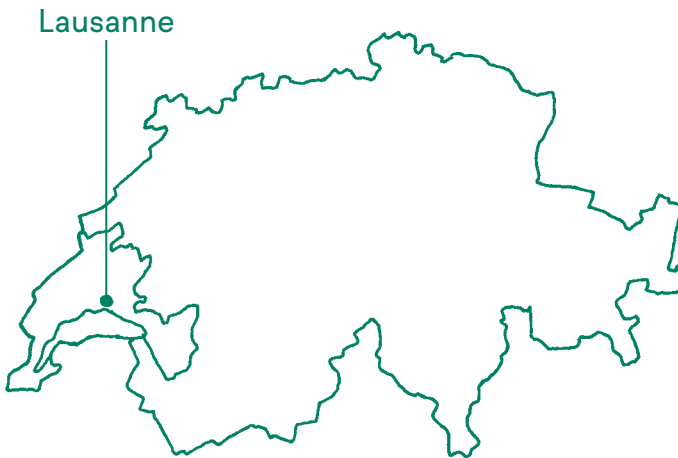


Émilie Moeschler, City Councillor,
Department of Sport and Social Cohesion



Lausanne in brief

Lausanne is Switzerland's fourth-largest city and is not only an Olympic and sustainable city, but also a centre of education and culture. It is not just a popular tourist destination but is also home to numerous international businesses, offering both quality of life and an attractive economic environment.

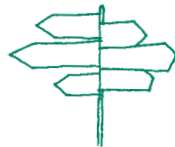


3 HILLS

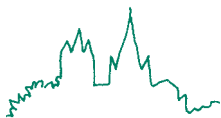
on which the city of Lausanne was built

18

CITY
DISTRICTS



5



**ANNOUNCEMENTS
OF THE TIME**

called out by the
Cathedral watchman or
woman every night

33 HECTARES

of vineyards owned by the city

100



MEMBERS

on the City Council

500

METRES'

difference in altitude
between the highest
and lowest parts of
the city

42%

**OF THE POPULATION
OF LAUSANNE**

does not have a
Swiss passport

168

NATIONALITIES



23,000

BUSINESSES

in Lausanne and the
surrounding region

1803

the year when Lausanne
became the capital of
Vaud canton



350 HECTARES

of parks and gardens



150,000

RESIDENTS RECORDED
in January 2023



39,000 STUDENTS

educated in
Lausanne
every year

215,000

JOBS GENERATED
by the local economy

Arriving in Lausanne: what to do first?

There are a number of formalities you have to complete when you arrive in Lausanne and the deadlines are often quite short. These are listed below, in order of priority.

- Register with the Residents' Registry
(Service du contrôle des habitants) (14-day deadline) (p. 16)
- Apply for a residence permit (as soon as possible) (p. 14)
- Take out a compulsory health insurance policy (3-month deadline) (p. 31)
- Enrol children in school (p. 25)
- Register with the Lausanne utilities provider
(Services industriels de Lausanne) (p. 16)
- Take out a fire insurance policy (p. 33)
- Submit a declaration to the Cantonal Tax Authority
(Administration cantonale des impôts) (p. 42)
- Exchange your foreign driving licence and request Swiss
registration plates for your vehicle (12-month deadline) (p. 40)

Any questions?

You will find all kinds of information in this brochure, organised by topic, along with the contact details of individuals and services who can help you.



“Welcome to Lausanne” services

Around 15,000 people come to settle in Lausanne each year and there are people of over 160 nationalities living here. Wherever you have come from, the City of Lausanne wants to make your arrival as easy as possible.



Municipal meet-and-greet evening

Every year, the City of Lausanne invites new arrivals to a meet-and-greet evening. Members of the municipal authorities and the administration are on hand to welcome you and tell you more about their activities. Interpreters also attend to break down any language barriers.

 www.lausanne.ch/accueil

Info cité

Info cité is the City of Lausanne’s main information centre. It provides advice to the city’s residents on various administrative procedures and helps them explore the things that interest them. It also offers information and documentation in response to a multitude of questions and guides people to the relevant departments.

 **Info cité**
 Place de la Palud 2, 1002 Lausanne
Tel. 021 315 25 55, infocite@lausanne.ch
www.lausanne.ch/infocite
Monday to Friday 8 am to 5 pm



“Living in Lausanne: a practical guide” brochure

The brochure you are holding is published by the Lausanne Office for Immigrants (Bureau lausannois pour les immigrés - BLI). It is produced in 12 languages. You can find it at the counter of the BLI, Info cité and the Residents’ Registry (Contrôle des habitants) of the City of Lausanne, among other places.

- 📍 **Bureau lausannois pour les immigrés (BLI)**
- 🌐 Place de la Riponne 10, 1002 Lausanne
Tel. 021 315 72 45, bli@lausanne.ch, www.lausanne.ch/bli
Monday to Friday 8 am to 12 noon, 1 pm to 5 pm

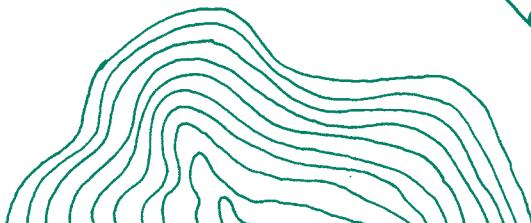
“Live, learn, work”

The free “Live, learn, work” service run by the Lausanne Office for Immigrants (Bureau lausannois pour les immigrés - BLI) provides information, in your own language, on work, education, training and day-to-day life in Lausanne. The service is available in French, Spanish, Portuguese and English. For other languages, you may request the presence of an interpreter.

- 📍 www.lausanne.ch/permanence-bli
- 🌐 Monday 5 pm to 7 pm, Saturday 10 am to 12 noon

The BLI regularly calls on community interpreters from the Appartenances association to interpret interviews in the context of the “Live, learn, work” service. You can also ask the association for help, in particular for written translations of certain documents (such as qualifications or birth certificates).

www.appartenances.ch



Your migration, integration and anti- racism specialists

Switzerland has adopted a Federal Act on Foreign Nationals and Integration (Loi sur les étrangers et l'intégration - LEI). According to the Act, immigrants must be welcomed and informed about the place they are now living in as soon as they arrive. One article of law (261bis of the Code pénal) also punishes certain racist behaviours. Numerous institutions, associations and individuals are responsible for applying these laws. A number of these are described below.

The Lausanne Office for Immigrants (Bureau lausannois pour les immigrés - BLI)

The BLI is the City of Lausanne's specialist office for integration and preventing racism. It promotes community living and equality of opportunity. It also assists the city with its integration policy.

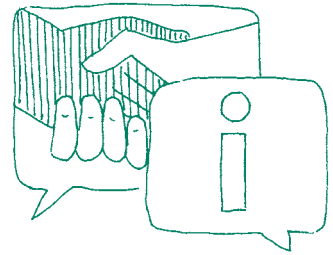
The BLI is located in the city centre. The office provides advice to everyone, regardless of nationality, status or country of origin. It provides information in several languages, for example, with regard to:

- French classes
- Looking for work or training
- Recognition of foreign qualifications
- Day-to-day life in Lausanne
- Racism issues
- Political rights
- Implementing a community integration project
- Naturalisation

The BLI also runs an information service about racism (permanence Info-racisme). This provides advice and information for anyone who experiences racism in Lausanne. The service is free of charge and confidential.

Bureau lausannois pour les immigrés (BLI)
Place de la Riponne 10, 1002 Lausanne
Tel. 021 315 72 45, bli@lausanne.ch
www.lausanne.ch/bli
Monday to Friday 8 am to 12 noon, 1 pm to 5 pm

Permanence Info-racisme
Place de la Riponne 10, 1002 Lausanne
Tel. 021 315 20 21, inforacisme@lausanne.ch
www.lausanne.ch/info-racisme
Monday, Wednesday and Thursday 2 pm to 5 pm
or by appointment



The Cantonal Office for Integration and Preventing Racism (Bureau cantonal pour l'intégration des étrangers et la prévention du racisme - BCI)

The BCI is Vaud canton's specialist service for integration and preventing racism. It has offices in Lausanne and in three other cities in Vaud. The BCI brochure "Welcome to the Canton of Vaud" provides information to migrants who have recently arrived in Vaud. This information is translated into 16 languages and is available on the website:

www.vaud-bienvenue.ch

The BCI also offers free consultations for anyone who has witnessed or been the victim of racist or discriminatory actions in Vaud canton, outside Lausanne. These are available by appointment only, on request, in several languages.

Bureau cantonal pour l'intégration des étrangers et la prévention du racisme (BCI)
Avenue de Sévelin 46, 1014 Lausanne
Tel. 021 316 49 59, info.integration@vd.ch
www.vd.ch/integration

La Fraternité of the Centre social protestant Vaud (CSP Vaud)

La Fraternité of the CSP Vaud exists to assist any Swiss or foreign national seeking information about migration. The association can also help you with various administrative, legal and social security procedures, for example, applying for a residence permit or family reunification.

📍 Centre social protestant Vaud (CSP Vaud) - La Fraternité

Place Arlaud 2, 1003 Lausanne

Tel. 021 560 60 98, frat@csp-vd.ch, www.csp.ch/fraternite

Information and advice sessions Tuesday and Thursday 5 pm to 7 pm, and Friday 9 am to 12 noon for undocumented migrants

Migrants' associations

There are numerous associations run by and for migrants in Vaud canton and Lausanne. These offer you the opportunity to meet people from your country or who speak your language. You can find a list on the website of the Lausanne Office for Immigrants (Bureau lausannois pour les immigrés - BLI).

www.lausanne.ch/associations-migrants

Rainbow Spot

The Rainbow Spot association supports migrants from the LGBTIQ+ community living in Vaud canton. The association provides information and assistance for administrative, legal and social security procedures. It also provides an opportunity for LGBTIQ+ people to meet.

🌐 www.rainbowspot.ch



Information and contact details

Residence permits

Swiss migration policy

The process of applying for a residence permit depends on where you come from. Switzerland distinguishes between people who come from:

- the European Union and the European Free Trade Association (EU/EFTA) (Union européenne et de l'Association européenne de libre-échange - UE/AELE). You can find the list of EU/EFTA countries at the bottom of this page¹
- third countries (i.e. all countries outside the EU/EFTA)

Residence permits

Anyone of foreign nationality who wants to settle in Switzerland for more than three months needs a permit. Among other things, a permit is required to:

- Work or study in Switzerland
- Join a family member

The various types of permit are as follows:

- L for a short-stay permit
- B for a residence permit
- C for a settlement permit
- G for a cross-border commuter permit

Where can you apply for a permit? If you come from the EU/EFTA go to the Residents' Registry. If you come from another country (known as a third country), go to the Swiss embassy or consulate in your country of residence. These institutions will then contact the competent authority, namely the Vaud canton Population Service (Service de la Population du canton de Vaud).

1. Austria, Belgium, Bulgaria, Croatia, Cyprus, Czech Republic, Denmark, Estonia, Finland, France, Germany, Greece, Hungary, Iceland, Ireland, Italy, Latvia, Liechtenstein, Lithuania, Luxembourg, Malta, Norway, Netherlands, Poland, Portugal, Romania, Slovakia, Slovenia, Spain, Sweden (list as at 01.01.2023)



Asylum

People seeking asylum in Switzerland may be given a permit. These decisions are taken by the Swiss Confederation. The various types of permit are as follows:

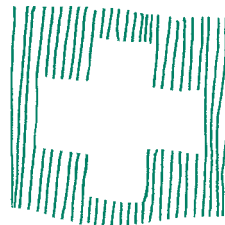
- N for asylum seekers
- B for a residence permit after being granted asylum
- F for temporary admission
- S for temporary protection

You can find detailed information about permits in your own language in the “Welcome to the Canton of Vaud” brochure and on the website:

 www.vaud-bienvenue.ch

Did you know?

Undocumented migrants can regularise their status under certain conditions. Is this your situation? Ask for advice from the undocumented migrants service run by La Fraternité of the CSP Vaud (see p. 13).



Accommodation

Registration with the Residents' Registry (Service du contrôle des habitants)

All residents of Lausanne must register with the Residents' Registry within 14 days of their arrival.

The first step is to send the following information and documents:

- Full identity (last name, first name, date of birth and nationality)
- Date of arrival in Lausanne
- Address in Lausanne
- Copy of an identity document
- If you have come from abroad, you must also indicate the reason for your stay.

You can send these documents by post or email.

The Residents' Registry will then contact you. You may be asked for more information, depending on your personal situation, since everyone's position is unique.

You can also check the website.

Service du contrôle des habitants (CH)

Rue du Port-Franc 18, 1002 Lausanne. Tel. 021 315 31 33, ch@lausanne.ch
www.lausanne.ch/ch. Monday to Friday 8 am to 11.30 am, 1 pm to 4.30 pm

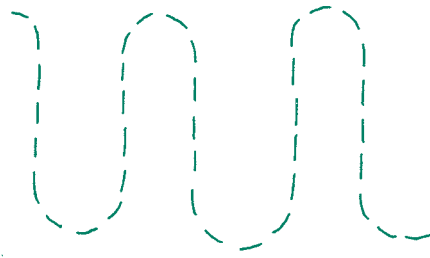
Lausanne utilities provider (Services industriels de Lausanne - SiL)

SiL is the gas and electricity supplier for Lausanne. Once you have registered with the Residents' Registry, you must also register with the SiL (but only if your accommodation or lease is in your name). You can register:

- On the internet
- In person
- By phone

Services industriels de Lausanne (SiL) - Espaces clients

Place Chauderon 23, 1002 Lausanne
Monday to Friday 8 am to 12 noon, 1 pm to 5 pm
Place de l'Europe 2, 1002 Lausanne
Monday to Friday 9 am to 6.30 pm, Saturday 9 am to 5 pm
Tel. 0842 841 841, www.lausanne.ch/sil



Finding accommodation

Use the internet to find an apartment or a house in Lausanne.

You can find advertisements on:

- www.homegate.ch
- www.immoscout24.ch
- www.immostreet.ch
- www.anibis.ch

Remember to talk to your friends and family and use social media too!

Lease

If you find accommodation you like, you can register your interest with the property manager or owner. You should generally include copies of the following documents:

- Identity document (and residence permit)
- Pay slips for the last three months
- RC-Ménage insurance (see p. 33)
- Extract from the Debt Collection Agency (Office des poursuites)

If you are successful, you sign a tenancy agreement (lease) and pay a deposit before you move in.

In Switzerland, you pay the cost of your accommodation monthly. This is called rent. The amount you pay includes service charges (water, heating, caretaking, etc.) but not electricity (see SiL p. 16).

Deposit

The deposit is the equivalent of three months' rent. This money is deposited in a bank account. It will be returned to you when you leave, provided everything in the accommodation is in order. What if you don't have enough money? You can borrow it from a company that provides loans for deposits. Note that you will pay interest on the amount you borrow.



Gérance Ville

The City of Lausanne Property Management Service (Service des gérances) is responsible for numerous residential properties, commercial premises and other rentals. You can find out more about what they offer and their rental procedures at www.lausanne.ch/immobilier, under the heading "Gérance Ville". Tenant selection is delegated to a committee to guarantee neutrality.



Service des gérances

Place Chauderon 9, 1002 Lausanne
Tel. 021 315 49 49, gerances@lausanne.ch
www.lausanne.ch/service-ger
Monday to Friday 8 am to 11.30 am, 1 pm to 4.30 pm

Infolog workshops

Do you need help finding accommodation? Welfare assistants from the Housing Assistance Scheme (Dispositif d'aide sociale au logement) run by the City of Lausanne can provide support and advice. Their "Infolog" service offers free information sessions and workshops on finding accommodation. No booking required.

Dispositif d'aide sociale au logement

Rue de l'Alé 31, 1002 Lausanne
Tel. 021 315 76 27, Tuesday 1.30 pm to 3.30 pm

Neighbourhood Party (Fête des Voisin-e-s)

The "Fête des Voisin-e-s" takes place every year on the last Friday in May. The event is an opportunity to get to know your neighbours better, and very useful if you have just arrived in Lausanne. The City of Lausanne Architecture and Housing Department (Service d'architecture et du logement) provides help and advice on organising the party.



Service d'architecture et du logement

Place Chauderon 9, 1002 Lausanne
Tel. 021 316 56 22, lafetedesvoisins@lausanne.ch
www.lausanne.ch/lafetedesvoisins

"I ♥ mes voisins. Le guide du bon voisinage"

This guide offers some simple rules on living happily as a community. It exists in several languages. The guide is published by the Lausanne Office for Immigrants (Bureau lausannois pour les immigrés - BLI) in cooperation with the Architecture and Housing Department (Service d'architecture et du logement)



 www.lausanne.ch/bli > publications

Tenants' Protection Association (Association de défense des locataires - ASLOCA)

ASLOCA is an association that specialises in tenancy law. It provides tenants with information on their rights and defends them if they are not respected. It also helps tenants to resolve any problems they face via an advice service and individual meetings. If you are interested in becoming a member and benefiting from their services, you can sign up on their website:

vaud.asloca.ch

Recycling

The City of Lausanne has set up a recycling scheme to protect the environment and generate energy. This includes different types of bin and various recycling facilities. Ordinary household waste - i.e. waste that cannot be recycled, such as plastic - must be placed in the official green and white bin bags (and then in the containers for your building). You can buy the bags in different sizes at supermarket checkouts.

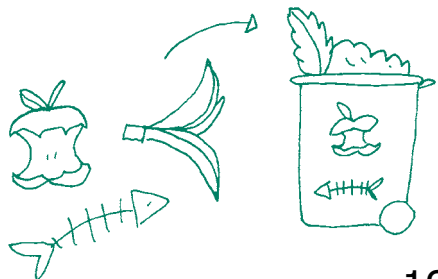
Recyclable waste, for example, paper, glass and biowaste (also known as compostable waste), must be placed in the containers near your home. Aluminium, tin, mineral and plant oils and textiles can be taken to the recycling points (écopoints) in your neighbourhood. Timber, PET and electronic equipment can be taken to collection points or to fixed or mobile waste sites (locations and collection dates can be found at www.lausanne.ch/ramassage).

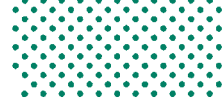
How do you recycle properly? A flyer in several languages explaining how recycling works in Lausanne can be found on the city's website:

 www.lausanne.ch/trier

Did you know?

Seven out of 10 households in Vaud canton rent their accommodation. Compared with other countries, owning is more unusual than renting.





Work

Finding work

Are you looking for a job? Your options for seeking and finding a job in Switzerland include:

- Responding to vacancies on the internet (for example, on www.jobup.ch)
- Signing up with a recruitment agency (Adecco, Planet Interim, Career Plus, etc.)
- Contacting businesses that interest you by sending them an unsolicited application
- Talking to friends and family or using social media

The BLI “Live, learn, work” service provides information and advice, in your own language, on the procedures to follow for finding work (see p. 10).

Application

You generally have to submit an application to respond to a job vacancy. This will include copies of the following documents:

- Covering letter
- Curriculum vitae (CV)
- Certificates of employment
- Training certificates

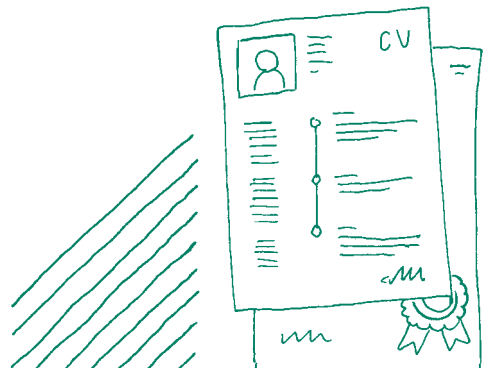
Make sure that when you arrive in Switzerland, these documents are up to date, well presented and translated into French. This will allow you to respond to vacancies quickly and give yourself the best possible chance of securing the job.

Do you need help with your application? There are a number of people in Lausanne who can help you (re)write your CV and draft your covering letters. These people are known as public writers.

For example:

Les scribes www.lesscribes.ch or

Point d'Appui www.eglisemigrationvd.com





Employment contract

Employment contracts in Switzerland are either fixed-term (for a limited period) or permanent (for an indefinite period). They can be for full-time or part-time work. The contract is valid as soon as you and the person employing you have agreed on the terms under which you are hired. An oral contract is therefore valid but it is recommended that it is produced in writing and signed.

Do you have questions about your contract, the conditions under which you are being hired (salary, welfare insurance, etc.) or the working conditions in the business (statutory working hours and rest periods, protecting your health, etc.)? The Lausanne Labour Inspectorate (Inspection du travail Lausanne) can provide information.

📍 Inspection du travail Lausanne

Place de la Riponne 10, 1002 Lausanne

Tel. 021 315 76 80, itl@lausanne.ch, www.lausanne.ch/itl

Monday to Friday 8 am to 11.30 am, 1 pm to 5 pm

Wednesday 1 pm to 5 pm by phone only (closed in the morning)

Salary

Your salary is the money your employer pays you each month in exchange for your work. Generally, you have the opportunity to negotiate your salary during your recruitment interview. To find out what salary you should be asking for (depending on your occupation and years of experience), visit the website www.lohnrechner.ch.

Switzerland has a number of collective labour agreements (conventions collectives de travail - CCT) in place. These guarantee good working conditions and an adequate salary. These agreements are reached by the trade unions (associations representing workers) and employers. There are several trade unions in Switzerland. The largest is called UNIA.

www.unia.ch

People who live and work in Switzerland are required to pay taxes. The level of tax you pay is based on your salary, your assets and your family situation (see p. 42).



Welfare insurance

In Switzerland, workers are entitled to welfare insurance and employers must register them for it. The level of contributions you pay for this insurance is shown on the pay slip you receive each month.

- The AVS contribution is mandatory once you earn 2,300 francs a year (or regardless of salary in the case of people employed in a private household).
- Affiliation to a 2^e pilier occupational pension (also known as the LPP) is compulsory once you are earning 21,510 francs a year.
- Occupational accident insurance (LAA) is compulsory.

If you work more than eight hours a week, your employer must provide insurance for both occupational and non-occupational accidents. You will find more information on these various types of insurance on pages 31 to 33.

Unemployment

Anyone who is looking for, loses or leaves a job can register with the Regional Employment Office (Office régional de placement - ORP). You must have resided officially in Lausanne and worked a minimum of 12 months in Switzerland over the last 24 months to be eligible for financial support (unemployment benefit) if you are unemployed. You must also have a residence permit. The advisers at the ORP can help you find a (new) job as quickly as possible. The ORP offers support with finding a job for people who have recently arrived and who have a residence permit. You have to register at their office.

📍 Office régional de placement (ORP)

Place Chauderon 9, 1002 Lausanne
Tel. 021 315 78 99, orp@lausanne.ch, www.lausanne.ch/orp
Monday to Friday 7.30 am to 11.45 am, 1 pm to 5 pm

Did you know?


If you work for an individual or in a private household (providing cleaning, child care, gardening, etc.), you are entitled to take part in the “Chèques-emploi” programme run by the EPER. This will provide you with welfare benefits.

www.chèques-emploi.ch

French classes and training courses

French classes for adults

Speaking and writing French is very important for finding a job and integrating socially into French-speaking Switzerland. Do you want to learn French? A number of institutions, associations and private schools offer classes for adults, either paid or free of charge. You can find a list of classes in the "Learn in Lausanne" (Apprendre à Lausanne) brochure published by the Lausanne Office for Immigrants (Bureau lausannois pour les immigrés - BLI). The information is available in several languages.

 www.lausanne.ch/apal

The BLI offers free French classes for beginners for five weeks during the summer. These take place on the shore of Lac Léman, at Vidy Plage, and provide a chance to learn French in a relaxed atmosphere. Child care for children aged two years and older is available so that their parents can take classes.

www.lausanne.ch/vidy-plage

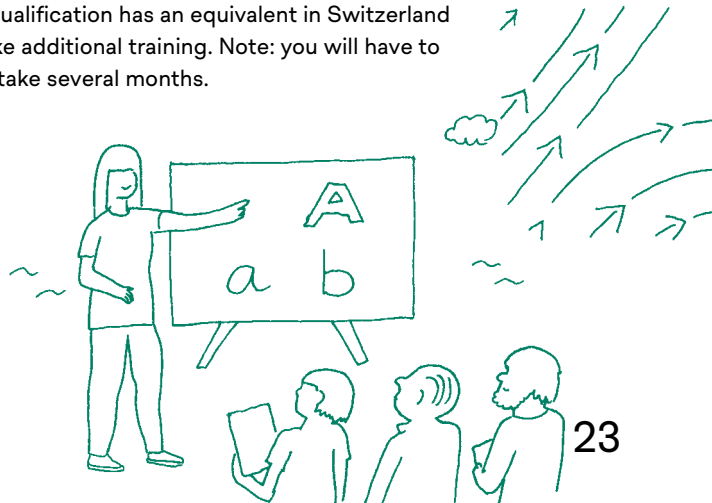
Recognition of foreign qualifications

Do you have a foreign qualification that you would like to have recognised in Switzerland? Contact the State Secretariat for Education, Research and Innovation (Secrétariat d'État à la formation, à la recherche et à l'innovation - SEFRI). It can tell you if your qualification has an equivalent in Switzerland or whether you will need to take additional training. Note: you will have to pay for this process and it can take several months.

www.sbf.admin.ch

The Découvrir association offers a service called "Redes". This is designed to help migrants have their qualifications recognised.

www.associationdecouvrir.ch



Careers advice

The Regional Careers Advice Centre (Centre d'orientation professionnelle de la région Centre), based in Lausanne, provides information and advice to adults, teenagers and school students on their career options. You can make an appointment to meet one of their specialists for an individual interview, free of charge. You can also ask for information, without an appointment, from the Studies and Professions Information Centre (Centre d'information sur les études et les professions - CIEP), which is open every afternoon.

📍 **Centre d'orientation professionnelle**
Rue de la Borde 3d, 1014 Lausanne
Tel. 021 316 11 20, info.osp@vd.ch
www.vd.ch/orientation

Study grants and assistance

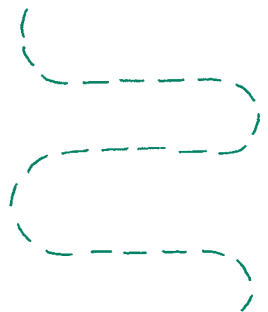
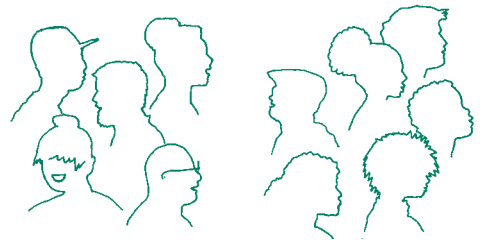
Under certain conditions, the Cantonal Office for Study and Apprenticeship Grants (Office cantonal des bourses d'études et d'apprentissage - OCBE), the Lausanne Work Help Foundation (Fondation lausannoise d'aide pour le travail - F.L.A.T) and the Envol association can help you to pay for training or professional fees. Visit their websites for more information.

www.vd.ch/ocbe
www.lausanne.ch/flat
www.association-envol.info

Did you know?

You can find a wide range of easy-to-access training courses, for example in IT, office software or budget management, on www.lausanne.ch/formations-migrants and in the "Learn in Lausanne" (Apprendre à Lausanne) brochure.

www.lausanne.ch/apal



Schools

Enrolling your children in school

Enrolling your children in school is one of the first things you should do after you arrive. You can do this by visiting the Schools and Extracurricular Services Department (Service des écoles et du parascolaire - SEP). This department is the central point of contact for all applications and then allocates children to the various schools in Lausanne. The preferred option is to allocate children to the school closest to their home.

The Schools and Wraparound Services Department also deals with wraparound care for children, i.e. before and after school (see p. 29).

Nine out of 10 children in Vaud canton attend a public school. The education they receive there is of high quality and free of charge. Would you prefer to enrol your child in a private school instead? Find information and a list of useful contacts at www.avdep.ch

📍 Service des écoles et du parascolaire (SEP)

Place Chauderon 9, 1002 Lausanne

Tel. 021 315 64 11, sep@lausanne.ch, www.lausanne.ch/sep

Monday to Friday 8 am to 11.30 am, 1 pm to 4.30 pm

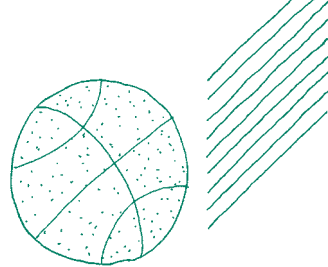
Vaud school system

Compulsory education in Vaud canton lasts for 11 years. Children start school at age four and finish when they are around 15 years old. The school curriculum in Vaud is split into several stages, cycles and years, from 1P to 11S. The website of the General Directorate for Compulsory Schooling and Specialized Teaching in Vaud Canton (Direction générale de l'enseignement obligatoire et de la pédagogie spécialisée du Canton de Vaud - DGEO) explains how the school system works in Vaud, in 10 languages. You will also find a series of diagrams comparing the Vaud school system with that of more than 30 countries.

www.vd.ch/scolarite

🌐 Translated information documents for parents





Non French-speaking pupils aged four to 15

Children aged four to eight years who do not speak French when they arrive in Lausanne will go to their local primary school. Following an initial conversation with the parents, the child will be enrolled in a regular class and will receive intensive French lessons.

Children aged eight to 15 years are guided towards the Resource Centre for pupils who speak other languages (Centre de ressources pour élèves allophones - CREAL). Following a conversation with the parents, the child will be enrolled in an access or regular class and will receive intensive French lessons. Once they have achieved an adequate level of French, the child will be taught full-time in a regular class.

Undocumented children in Vaud are entitled to attend school for compulsory and post-compulsory education and are admitted to some vocational schools.

Non French-speaking pupils aged 15 to 25

Non French-speaking young people aged 15 to 25 years are entitled to spend a year in the access school (École de l'accueil - EdA). Admission depends on availability. Young people who attend the EdA learn French, familiarise themselves with their new living environment and prepare for their future career.

Enrolment in the EdA can be done through the Portail Migration:

- In person (on the fourth floor of the OCOSP)
- By phone
- On the internet

The Portail Migration also offers welcome sessions, in several languages, for young migrants up to the age of 25 years who are looking for education or training.

📍 Portail Migration (Unité Migration Accueil UMA)

Office cantonal d'orientation scolaire et professionnelle (OCOSP)
Rue de la Borde 3d, 1014 Lausanne
Tel. 021 316 11 40, www.vd.ch/orientation
Monday to Thursday 8 am to 12 noon



Native language and culture classes

A child who speaks their mother tongue fluently will find it easier to learn another language. This is why associations, schools and embassies offer native language and culture classes. These classes help pupils to further their knowledge of their mother tongue and native culture. They also help them to learn French and develop a multicultural identity.

You can find a list of native language and culture classes in the "Learn in Lausanne" (Apprendre à Lausanne) brochure published by the Lausanne Office for Immigrants (Bureau lausannois pour les immigrés - BLI).

www.lausanne.ch/apal

Did you know?

Once you arrive in Lausanne, you will need to attend meetings with your children's teachers. You can ask for an interpreter to attend these meetings and translate for you.



Family

Family reunification

If you live and work in Switzerland, you can have your family members join you. This is known as a family reunification request. It is not automatic and certain conditions must be fulfilled. If you come from the EU/ EFTA, you can apply through the Residents' Registry. If you come from a third country, contact the Swiss embassy or consulate there. These institutions will forward your application to the Vaud canton Population Service (Service de la Population du canton de Vaud), which will make the decision.

If you come from a third country, you have up to five years for your spouse or children under the age of 12 to join you. The time limit for children aged between 12 and 18 years is one year only.

Civil registry

Do you have questions about a marriage, birth, change of first name or last name, or a death? You can find information on www.vaud-bienvenue.ch or the website of the Vaud canton Civil Registry (État civil du canton de Vaud). The information available includes the procedures you need to follow, depending on your request.

État civil du Canton de Vaud

Avenue de Sévelin 46, 1004 Lausanne

Tel. 021 557 07 07, etat.civil@vd.ch, www.vd.ch/etat-civil

Forced marriage

A marriage is classed as forced when one person is unable to refuse to marry. Everyone in Switzerland has the right to decide whether they wish to marry and who their spouse is. The Cantonal Office for Integration and Preventing Racism (Bureau cantonal pour l'intégration des étrangers et la prévention du racisme - BCI) offers free consultations.

 www.vd.ch/mariage-si-je-veux

Child care options (children from birth to six years)

In Lausanne, you can either have your child cared for in a day care centre (centre de vie infantine - CVE) - also known as crèche - or by a childminder in a family environment. A childminder is someone who looks after children in their home. These are all paid services but the price depends on your family situation and your salary. The Lausanne Families Office (Bureau lausannois pour les familles - BLF) can provide information on the different options and deals with enrolments.

📍 Bureau lausannois pour les familles (BLF)

Place Chauderon 9, étage T, 1002 Lausanne

Tel. 021 315 60 00, www.lausanne.ch/blf

Monday to Friday 8.30 am to 11.30 am, 1.30 pm to 4.30 pm

Do you need child care for just a few hours a week? Various play centres (haltes-jeux) and kindergartens in Lausanne also welcome children.

www.lausanne.ch/haltes-jeux

Out-of-school care (children aged four to 12 years)

Out-of-school care refers to care offered to children before and after school, as well as during the school lunch break. To enrol children aged four to six years (1P-2P), contact the Lausanne Families Office (Bureau lausannois pour les familles - BLF) (see above). For older children, contact the Schools and Extracurricular Services Department (Service des écoles et du parascolaire - SEP) (see below). Handy tip: this department also deals with enrolments for supervised homework.

📍 Service des écoles et du parascolaire (SEP)

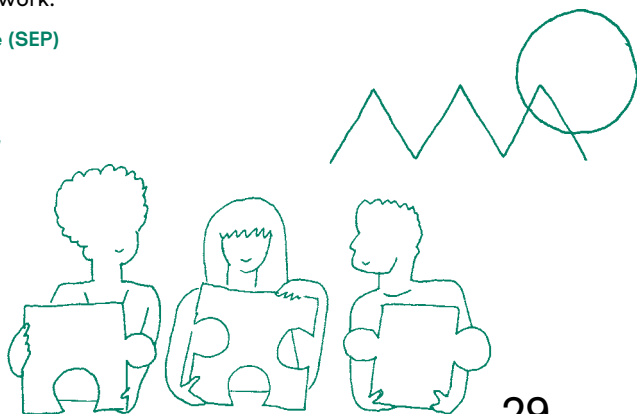
Place Chauderon 9, 1002 Lausanne

Tel. 021 315 64 11, sep@lausanne.ch

www.lausanne.ch/sep

Monday to Friday 8.30 am to 11.30 am,

1.00 pm to 4.30 pm



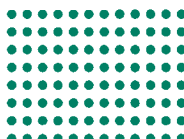
Holiday activities

During the school holidays, the Holiday Activities Service (Domaine accueil vacances) of the City of Lausanne and its partners offer a wide range of activities for children. All activities are professionally managed, at a very affordable price. Contact the service for more information and to enrol your children!

- 📍 **Domaine accueil vacances**
Place Chauderon 7a, étage T, 1002 Lausanne
Tel. 021 316 68 22, www.lausanne.ch/jeunessevacances
Monday to Friday 7.30 am to 11.45 am, 1.00 pm to 4.30 pm

Did you know?

You can register your child for a crèche or nursery place from the fourth month of pregnancy, or one year before you would like them to start. Don't delay: large numbers of people apply and you may have to wait before you are offered a place.



Insurance

Compulsory health insurance (Assurance-maladie obligatoire - LAMal)

Health insurance is compulsory in Switzerland. This allows you to access the health care system and high-quality care while only paying part of the cost. You have three months from your date of arrival to take out a policy with a Swiss insurer. There are multiple insurers available and you are free to select the one you prefer. When making your choice, look carefully at the cost of the premium (the amount you pay for insurance each month). If you need help, look at an online comparison site such as www.priminfo.ch or visit the Lausanne Social Insurance Agency (Agence d'assurances sociales lausannoise).

📍 Agence d'assurances sociales (AAS)

Place Chauderon 7, 1002 Lausanne

Tel. 021 315 71 00, www.lausanne.ch/sas

Monday to Friday 8.30 am to 11.45 am, 1.00 pm to 4.30 pm

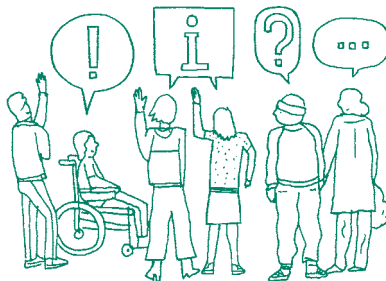
(closed Thursday morning)

Note: you are required to pay compulsory insurance premiums from the day you arrive in Switzerland. Even if you wait several weeks (up to a maximum of three months) to take out your insurance policy, you will still have to pay the premiums for the previous weeks. The bill can be high, so make sure you allow for it in your budget!

Compulsory health insurance subsidy

Compulsory health insurance premiums represent a significant expense, depending on your salary and the number of people who depend on you (family, spouse and children). The Vaud Health Insurance Office (Office vaudois de l'assurance-maladie - OVAM) offers financial support to people in modest financial circumstances in Vaud canton. This support is known as a subsidy. You can check your entitlement to a subsidy and submit an application on the website:

www.vd.ch/subside-assurance-maladie





Top-up insurance

Some treatments - such as natural remedies - are not covered by compulsory health insurance. You may therefore opt to take out one or more top-up insurance policies. This insurance is optional: you are not obliged to take it out and the insurer is free to accept or reject your application. This is why you are advised to insure your children fairly early on and to think carefully before terminating your policy.

Welfare insurance

Welfare insurance in Switzerland is paid partly by the employee and partly by their employer. It is important, because it guarantees income in retirement or if you have a health issue, a period of not working or financial difficulties. If you work, your welfare insurance contributions are deducted from your salary. You can see the deductions on your pay slip.

A list of welfare insurances can be found below:

- **AVS (1^{er} pilier) Old-age and survivors' insurance:** for your retirement
- **AI Disability insurance:** in case you have a long-term health problem
- **PC Top-up insurance:** if charges are too high for you to cover
- **AC Unemployment insurance:** if you lose or leave your job
- **LPP (2^e pilier) Occupational pension:** to supplement AVS/AI
- **APG Loss of earnings allowance:** in the case of military service or maternity/paternity leave
- **Family allowances:** financial support for each child (on request)

Accident insurance (Assurance-accidents - LAA)

Accident insurance, like health insurance, is compulsory in Switzerland. If you work for an employer for at least eight hours a week, accident insurance covers both work-related and non work-related accidents. If you work less than eight hours a week, accident insurance only covers work-related accidents. If you are self-employed, you must take out your own insurance.

Fire and natural disaster insurance (Assurance incendie et éléments naturels - ECA)

Fire and natural disaster insurance for your accommodation and personal property is compulsory in Vaud canton. In Lausanne, you must take out a policy with the Vaud canton Fire and Natural Disasters Insurance Office (Établissement d'assurance contre l'incendie et les éléments naturels du canton de Vaud - ECA). You can do this either:

- On the internet
- In person

📍 **ECA - Agence de Lausanne**
Avenue du Grey 111, 1002 Lausanne
Tel. 0800 721 721, www.eca-vaud.ch

Other insurance

There are other types of insurance for specific items and needs. For example:

- **Civil liability (RC) and Household:** in case of damage to your personal effects or furniture, or those of someone else
- **Life insurance (3^e pilier):** in addition to AVS and 2^e pilier (contributions are tax-deductible)
- **Vehicle insurance:** for breakdown, accidents and various types of damage to your vehicle (car, motorbike, etc.)
- **Travel insurance:** if you have to cancel a trip, lose your luggage or have a health problem abroad
- **Legal assistance:** so that you can ask a lawyer for help if you have a problem with the law
- **Pet insurance:** if you need treatment for your pet

These forms of insurance are optional but recommended, and can protect you from nasty surprises.

Did you know?

You can change your compulsory health insurance policy each year for the following year, before 30 November. You must do so in writing.

Health

Important reminder

Take out compulsory health insurance for you and all members of your family within three months of arriving in Switzerland. (see p. 31)

What should you do if you have a health problem?

It is important to act appropriately and as quickly as possible if you have a health problem.

If it is not an emergency, you can:

- Go to a pharmacy and ask a pharmacist for advice
- Make an appointment with your general practitioner, who will refer you to a specialist if necessary
- Call the out-of-hours service when pharmacies and your doctor's practice are closed on 0848 133 133

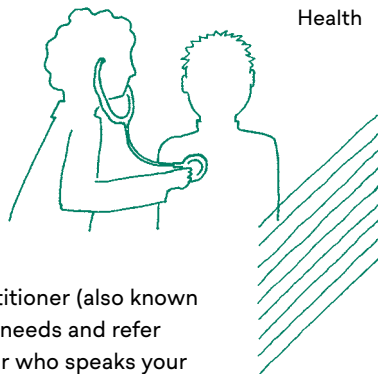
In a life-threatening emergency:

- Go to the hospital emergency department
- Call 144 for an ambulance

Pharmacies

Pharmacies in Switzerland sell medicines. Pharmacists can also offer basic health advice. In general, their opening hours are the same as shops. Some pharmacies are open on Sundays and until late in the evening: these are known as out-of-hours pharmacies.





General practitioners

Most people in Switzerland register with a general practitioner (also known as a family doctor). They will keep track of your medical needs and refer you to specialists where necessary. You can find a doctor who speaks your language. The Vaud Society of Medicine (Société vaudoise de médecine - SVM) has a list of doctors in Vaud and the languages they speak.

 www.svmed.ch

Hospitals in Lausanne

Numerous medical facilities in Lausanne offer high-quality care to the city's residents, including hospitals, on-call services, outpatient clinics, clinics and emergency services. Here are three important addresses:

-  **Centre hospitalier universitaire vaudois (CHUV)**
Rue du Bugnon 46, 1011 Lausanne, 021 314 11 11, www.chuv.ch
-  **Urgences CHUV et Unisanté**
Rue du Bugnon 44, 1011 Lausanne, 021 314 11 11, www.unisante.ch
-  **Hôpital de l'Enfance (HEL)**
Chemin de Montétan 16, 1004 Lausanne, 021 314 84 84, www.chuv.ch/fr/dfme

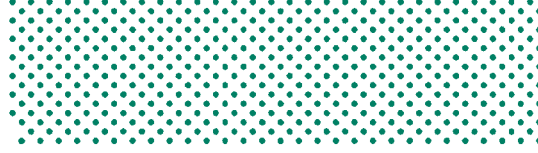
Maternity/Paternity

Are you about to become a mum or dad? Medical care during pregnancy is provided by gynaecologists and midwives. Costs are covered by compulsory health insurance from the 12th week of pregnancy onwards.

Following childbirth, the mother is entitled to 14 weeks' maternity leave. She receives 80% of her salary during this period. The father or the mother's female partner is entitled to 14 days' pay and 10 days of parental leave. They must take this leave within six months of the birth.

The Panmilar association offers support, in your own language, during pregnancy and after the birth of your child. This is provided by midwives and community interpreters. It is also an opportunity to meet other parents-to-be, ask questions and prepare to welcome your child.

 www.panmilar.ch



Sexual health

The Centre PROFA Lausanne is your primary point of contact for all issues involving sexual health, your relationship as a couple, sexology and the perinatal period. It offers advice sessions and medical consultations. Its approach is confidential and tailored to each individual situation, without discrimination or judgment.

Centre PROFA Lausanne
Avenue Georgette 1, 1003 Lausanne
www.profa.ch

Mental health

The association Appartenances offers psychotherapy and psychiatric consultations for individuals (and those close to them) suffering from problems associated with the migration process, experience of war or torture, and any other form of collective violence. It is possible to ask for a community interpreter to be present for translation.

 **Consultation Psychothérapeutique pour Migrant-e-s (CPM) Appartenances**
Rue des Terreaux 10, 1003 Lausanne
Tel. 021 341 12 50, cpm.lausanne@appartenances.ch
www.appartenances.ch

The Psy&Migrants unit at CHUV provides easier access to mental health care in complex situations for migrants in the Lausanne region. It can provide referrals to the care network and offers expertise in transcultural psychiatry. You can contact the unit by phone on 079 556 17 89 or by e-mail at psy-migrants@chuv.ch.



Domestic violence

Domestic violence is prohibited in Switzerland. If you are a witness or victim of domestic violence, you can ask for specialist help. Here is a list of addresses:

- **The Violence Medical Unit (Unité de médecine des violences) at CHUV:** recording of physical injuries www.chuv.ch
- **Centre Malley-Prairie:** consultations for all and emergency accommodation for women and their children www.malleyprairie.ch
- **Centre LAVI:** psychological, legal, financial and practical support for victims and their families www.profa.ch/lavi
- **Centre Prévention de l'Ale:** welcome, assistance and support for people who want to stop acting violently www.prevention-ale.ch
- www.violencequefaire.ch: website with useful information about violence

Point D'Eau Lausanne (PEL)

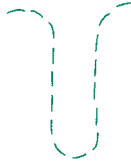
The Foundation Point D'Eau Lausanne offers a range of services to improve the health of people in vulnerable situations. Consultations are available with nursing staff, dentists, doctors, osteopaths, physiotherapists and masseurs. The Foundation also offers low-cost personal hygiene services (showers, laundry and hairdressing).

Point D'Eau Lausanne (PEL)

Avenue de Morges 26, 1004 Lausanne
Tel. 021 626 26 44, info@pointdeau-lausanne.ch
web.pointdeau-lausanne.ch

Did you know?

The City of Lausanne facilitates access to a large number of buildings for elderly people or those with a disability who find it difficult to move around. A list of these buildings can be found on the website www.lausanne.ch/accessibilite



Transport

The City of Lausanne encourages residents to prioritise active, sustainable mobility - i.e. walking, cycling and public transport - to protect the environment and help combat climate change. This is part of the city's Climate Plan, which aims to achieve 0% carbon by 2030.

CFF (Chemins de Fer Fédéraux - Swiss Federal Railways)

The CFF provides train travel to all passengers throughout Switzerland. You can buy tickets, season tickets and discount cards on the internet, at the counter or at ticket machines in certain stations. You can also use the app "Mobile CFF".

www.cff.ch

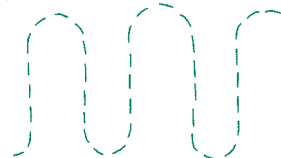
CFF day tickets (Flexi-Card) are available to people who live in Lausanne for 49 fr.

www.lausanne.ch/carte-journaliere

Mobilis Vaud

Public transport in Vaud is organised into travel zones. The system is called Mobilis. Lausanne covers zones 11 and 12. You can buy tickets for one or more zones. Tickets have a limited validity period, during which you can use all public transport in the zone you have chosen (bus, metro or trains).

www.mobilis-vaud.ch





TL

The Lausanne Region Public Transport service (tl) allows you to travel by bus, train and metro in Lausanne and the surrounding districts. You can buy tickets and season tickets by text message, using the “tl” app, on the website or at the customer service centre in Flon. Take a look at their website or visit them in person!

📍 **Centre clientèle TL Flon**
Place de l'Europe 5B, 1003 Lausanne
Tel. 021 621 01 11, www.tl.ch

As part of its Climate Plan, the City of Lausanne offers subsidies on tl Grand Lausanne season tickets (zones 11+12) for retired people and young people in education or training, among others.

www.lausanne.ch/rabais-tl

Cycling

The City of Lausanne makes it easier to travel by bike by creating bicycle paths and encouraging people to buy electric bikes. It reimburses part of the purchase price of an electric bike at either 15% (maximum 400 fr.), or 30% (maximum 800 fr.) for people under the age of 25 and those who are entitled to a compulsory health insurance subsidy. You can apply for a reimbursement online at www.equiwatt.ch.

Walking

Walking is the simplest and most ecological way of travelling short distances. It is also a physical activity that helps you stay in good health. The City of Lausanne does everything it can to make walking safer and more enjoyable, including pedestrian pathways, green routes and extending pedestrian and low-traffic areas.

www.lausanne.ch/pietons



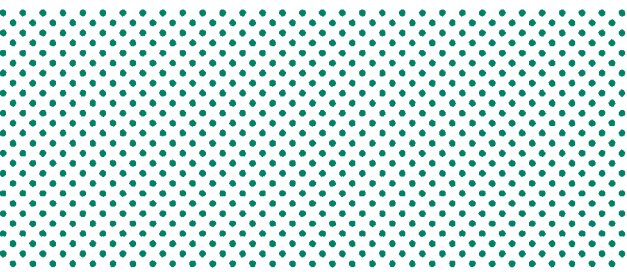
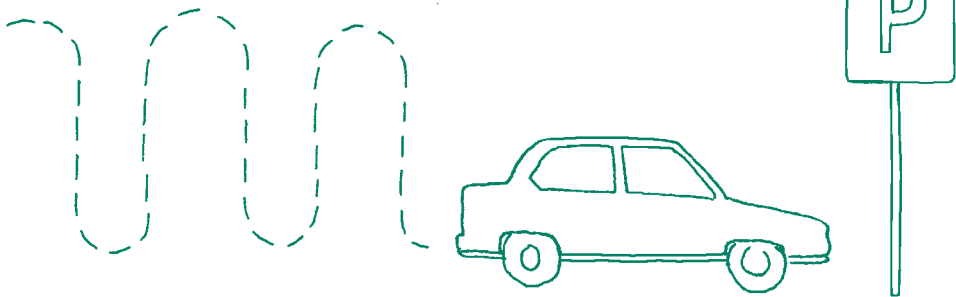
Cars and motorised vehicles

Do you have a foreign driving licence? You will need to exchange it for a Swiss licence when you arrive in Lausanne. Do you have one or more cars? Make sure you apply for Swiss registration plates as soon as possible. You can complete both these formalities by contacting the Vehicle and Driving Department (Service des automobiles et de la navigation - SAN) within 12 months of your arrival in Lausanne.

 **Service des automobiles et de la navigation (SAN)**

Avenue du Grey 110, 1014 Lausanne
Tel. 021 316 82 10, www.vd.ch/san

Note: it will no longer be permitted to drive vehicles with an internal combustion engine (i.e. petrol and diesel vehicles) in Lausanne from 2030 onwards.



Parking

In Lausanne, you can lease private parking spaces indoors or close to where you live. You can also park your vehicle in public car parks. There are two other parking services you may find useful:

- **Parkings-Relais (P+R):** this is a combined service, which offers parking for your vehicle and a public transport ticket for zones 11+12. This allows you to park in one of the six park-and-ride car parks on the outskirts of Lausanne and travel into the centre by metro or bus. You can purchase tickets for a day, a month or more.
- **Macarons:** residents of Lausanne can purchase parking permits (macarons) to park their car for longer in the blue zones in their neighbourhood. You can apply for these from the Traffic and Parking Office (Office de la circulation et du stationnement) of the Lausanne police, either on their website or in person.

Office de la circulation et du stationnement

Rue St-Martin 31, 1002 Lausanne
 Tel. 021 315 38 00, police@lausanne.ch
www.lausanne.ch/stationnement
 Tuesday to Friday 7.30 am to 5 pm

Did you know?

Children in Switzerland can travel free of charge up to the age of six, and at half price from six to 16 years. With a carte Junior (30 fr. per year), children up to the age of 16 accompanied by their parents travel free of charge throughout the Swiss public transport network. Note that you also need to buy a ticket for dogs... and bikes!

Finance, tax and telecommunications

Opening a bank account

It is useful to open a bank account in Switzerland soon after your arrival so that you can receive your salary, pay bills or send money abroad. You can either:

- Visit banks in person, or
- Find information on their websites

Some banks ask for an identity document and evidence of your home address and/or salary to open an account.

Tax

Anyone living in Switzerland - whether or not they have a job and a salary - must pay tax from the age of 18 upwards. You will therefore have to complete an annual tax return. The tax authorities will send you this document at the start of the year. It can be completed online using the VaudTax service.

www.vd.ch/vaudtax

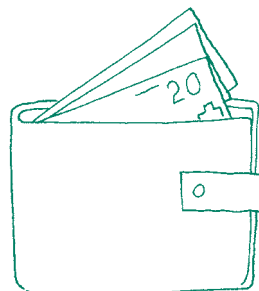
If you have a salary, you should register with the tax authorities to make payments on account. You can do this online at www.vd.ch/acomptes. Foreign workers who do not have a C settlement permit (permis C) are subject to taxation at source. Tax is therefore deducted directly from their salary.

Administration cantonale des impôts (ACI)

Route de Berne 46, 1014 Lausanne
Tel. 021 316 00 00, www.vd.ch/impots
Monday to Friday 8 am to 5 pm

Do you need help completing your tax return?
Contact the advice service run by AVIVO.

www.avivo-vaud.ch/permanences



Dog licence

Dogs in Lausanne must have a licence. Please register your animal with the Lausanne Tax Office. You can register:

- By phone on 021 315 43 21
- On the internet www.lausanne.ch/impots

Budget and debts

Do you have questions about debt? Do you have debts? The specialists at Parlons cash! can provide information and advice and point you to various institutions or associations depending on your situation and needs.

Parlons cash!

Tel. 0840 43 21 00, www.vd.ch/parlons-cash

Monday to Thursday 8.30 am to 1 pm

Lausanne Social Services (Service social de Lausanne - SSL)

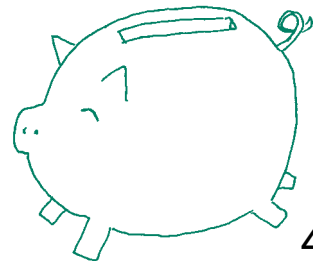
Lausanne Social Services provide support for people in need living in Lausanne. Welfare assistance in Vaud includes financial assistance and measures to help people integrate into society and the workplace. You can find information about the various services available, by subject and service provider, on its website.

📍 Service social Lausanne (SSL)

Place Chauderon 4, 1002 Lausanne

Tel. 021 315 75 11, ssl@lausanne.ch, www.lausanne.ch/ssl

Monday to Friday 8.30 am to 11.45 am, 1.00 pm to 4.30 pm
(closed Thursday morning)



Phone, television and internet

Several companies in Switzerland offer subscriptions or fixed-price packages for phone, television and internet services. You can ask for a combined package that includes a number of services. The Lausanne utilities provider (Services industriels de Lausanne - SiL) also offers a phone, television and internet package. This is called Citycable (see p. 16). Ask in store or check on the internet for more information.

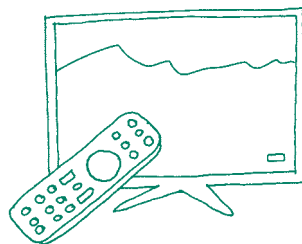
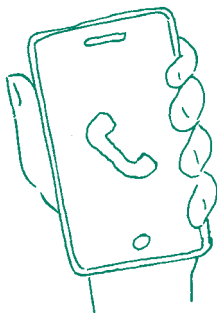
SERAFE fee

Anyone who registers with the Residents' Registry will receive an annual bill for radio and television. This is called the Serafe fee. It must be paid by every household.

www.serafe.ch

Did you know?

The use of welfare assistance by migrants may influence whether they are able to obtain or renew a residence permit. Contact Lausanne Social Services (see p. 43) or the Fraternité of CSP Vaud (see p. 13) for more information.





Leisure

Art and culture

Lausanne is a city of culture. You will find events and performances in a wide range of areas, including music, drama, the visual arts and cinema, in places as diverse as libraries, theatres, museums and galleries. Lausanne also hosts numerous festivals and night-time events that attract audiences from all over Switzerland and Europe.

www.lausanne.ch/culture

The Lausanne Office for Immigrants (Bureau lausannois pour les immigrés - BLI) publishes a brochure called "Learn in Lausanne" (Apprendre à Lausanne), including a list of libraries with books for all ages, in French and other languages.

www.lausanne.ch/apal

Sport and physical activity

As an Olympic capital, Lausanne supports sport for all and encourages a healthy and active lifestyle. The city has over 300 sports clubs and hosts more than 50 sporting events every year. Lausanne also offers numerous facilities for residents, including sports centres, sports grounds, outdoor fitness facilities, swimming pools and skating rinks.

www.lausanne.ch/sport

The calendar on the City of Lausanne website lists all the cultural and sporting events taking place in the city. You can search by theme, location or date.

www.lausanne.ch/agenda



Tourism

Lausanne Tourisme provides information on activities, events, restaurants and walks to help you explore and enjoy the city. You can get advice in person, as well as a range of useful documentation, from the Lausanne Tourist Office.

www.lausanne-tourisme.ch

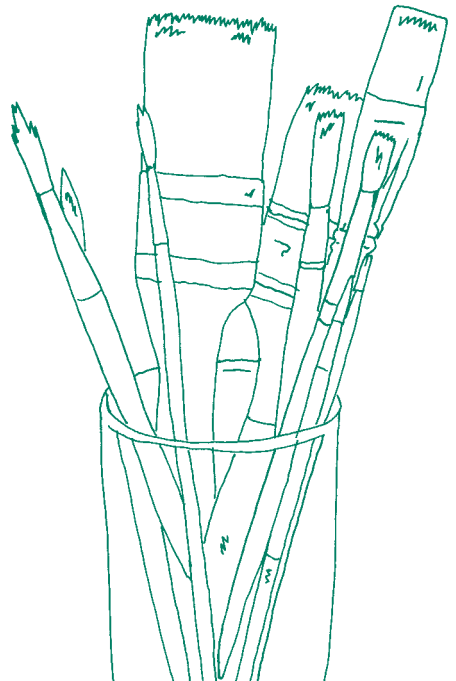
Socio-cultural activities

Lausanne has five community centres, 10 socio-cultural centres and two adventure play areas. These organise a range of activities for all ages. The aim is to encourage people to meet and build relationships between the city's residents. They are managed by the Lausanne Foundation for Socio-cultural Activities (Fondation pour l'animation socioculturelle lausannoise - FASL), in conjunction with neighbourhood associations.

www.fasl.ch

Did you know?

Most museums in Lausanne are free of charge on the first Saturday of each month!



Life as a citizen

Swiss political system

Switzerland is a federal state organised on three political levels: the Confederation, the cantons and the communes (districts). It has 26 cantons, 2,136 communes (as of 1 January 2023) and a population of around 8.7 million residents.

Switzerland is a semi-direct democracy. It is governed by the Federal Assembly (legislative power), the federal courts (judicial power) and the Federal Council (executive power). The President is elected from the seven members of the Federal Council and changes every year.

Political rights

Swiss citizens acquire political rights at the age of 18. This allows them to:

- Vote
- Elect
- Be elected
- Instigate and sign a popular initiative or a referendum

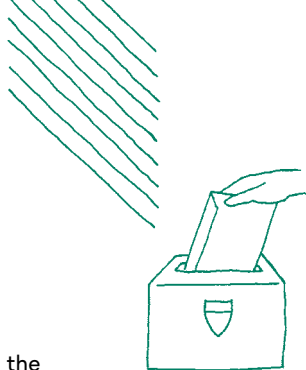
People in Switzerland are often asked to vote on communal, cantonal or federal decisions and to elect political representatives.

You can find information about political rights and voting at

www.lausanne.ch/votations.

Political parties

Switzerland has several political parties. Political parties are groups of people who share the same ideas. They represent the interests and opinions of the Swiss population and communicate the people's requests to the authorities. People elected to the City Council or municipal authority in Lausanne are all members of a political party.



BLI citizen meetings

The Lausanne Office for Immigrants (Bureau lausannois pour les immigrants - BLI) organises citizen meetings. These are designed to encourage political and social participation for migrants and the whole population. They can include information sessions, discussions and guided tours.

www.lausanne.ch/bli-rdvcitoyens

Volunteering

Volunteering is very common in Switzerland. It means giving time to a cause, organisation or activity. Volunteer work is not paid but enriches society, social relationships and the well-being of all citizens. Would you like to get involved? The following organisations can help:

www.benevolat-vaud.ch

www.volontaireslausannois.ch



Naturalisation

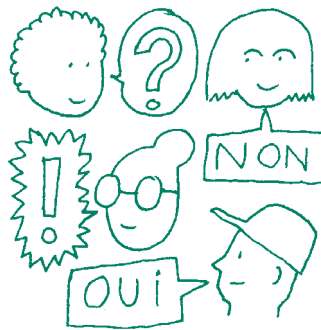
Under certain conditions (10 years' residence in Switzerland, two years in Vaud canton and a C settlement permit (permis C), among other things), you can apply for Swiss nationality. This is called a naturalisation request (demande de naturalisation). Find out more from the naturalisations office! You can also find classes and information brochures on their website.

📍 Naturalisations - Bureau lausannois pour les immigrés (BLI)

Place de la Riponne 10, 1002 Lausanne
Tel. 021 315 22 31, naturalisations@lausanne.ch
www.lausanne.ch/naturalisation
Tuesday and Friday 10 am to 12 noon

Did you know?

Foreign nationals in Lausanne who have held a B or C permit for 10 years and who have lived in Vaud canton for three years have political rights. They can vote on the municipal plan, elect and be elected to the City Council or the municipal authority and sign municipal initiatives and referendums.



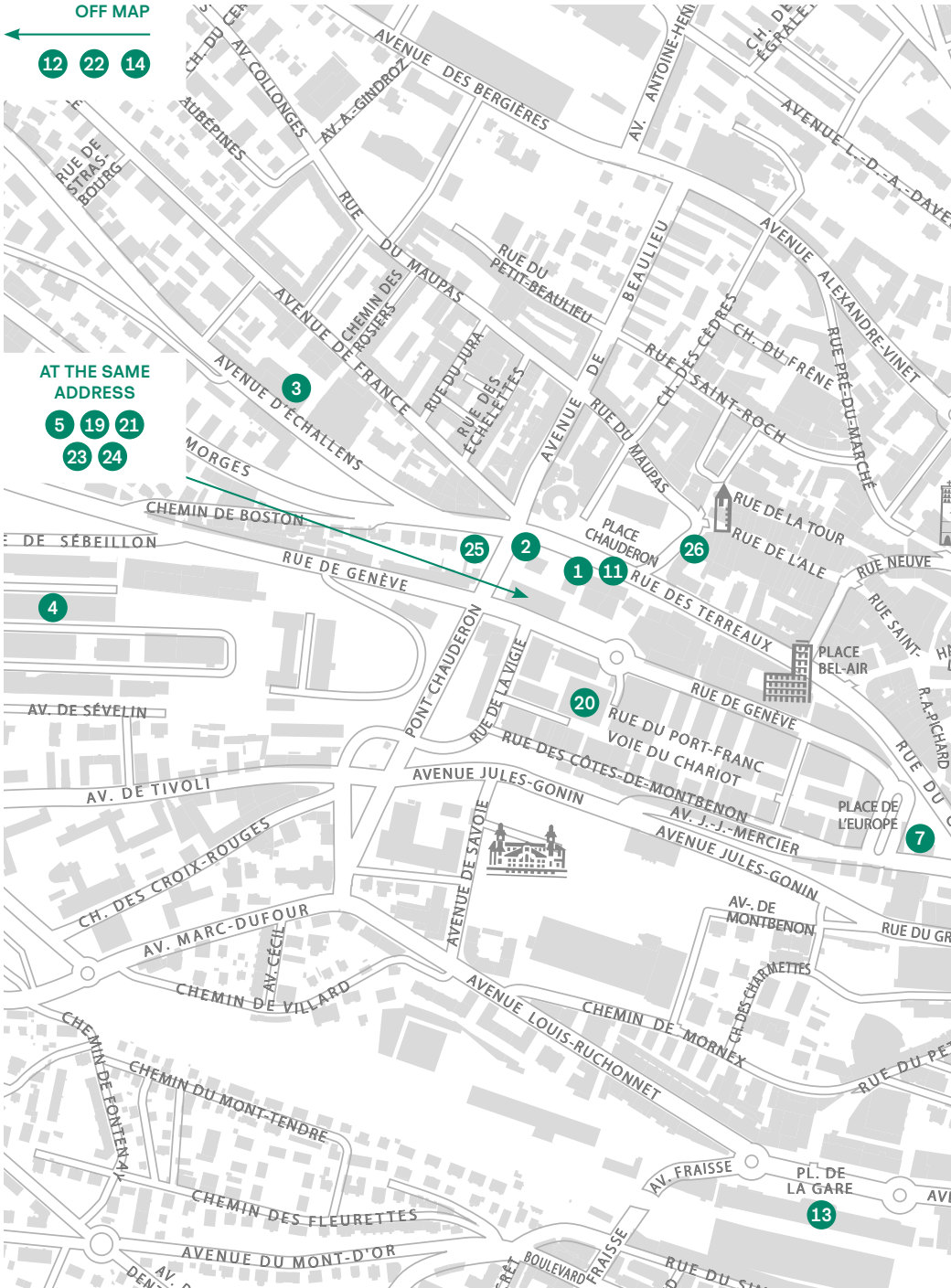
1. **Agence d'assurances sociales (AAS)** (p. 31)
Place Chauderon 7
2. **Bibliothèque Chauderon**
Place Chauderon 11
3. **Bibliothèque Jeunesse**
Avenue d'Echallens 2A
4. **Bureau cantonal pour l'intégration des étrangers et la prévention du racisme (BCI)** (p. 12)
dont "Mariage forcé" (p. 28)
Avenue de Sévelin 46
5. **Bureau lausannois pour les familles (BLF)** (p. 29)
Place Chauderon 9, étage T
6. **Bureau lausannois pour les immigrés (BLI)** (p. 11)
dont "Vivre, se former, travailler" (p. 10)
"Info Racisme" (p. 12)
et "Naturalisations" (p. 49)
Place de la Riponne 10
7. **Centre clientèle tl Flon** (p. 39)
Place de l'Europe 5B
8. **Centre d'orientation professionnelle** (p. 24)
et **Portail Migration** (p. 26)
Rue de la Borde 3D
9. **Centre hospitalier universitaire vaudois (CHUV)** (p. 35)
Rue du Bugnon 46
10. **Centre social protestant Vaud (CSP Vaud) - La Fraternité** (p. 13)
Place Arlaud 2
11. **Domaine accueil vacances** (p. 30)
Place Chauderon 7a, étage T
12. **ECA - Agence de Lausanne** (p. 33)
Avenue du Grey 111
13. **Gare de Lausanne**
14. **Hôpital de l'Enfance (HEL)** (p. 35)
Chemin de Montétan 16
15. **Hôtel de police**
Rue St-Martin 33
16. **Info cité** (p. 9)
Place de la Palud 2
17. **Inspection du travail Lausanne** (p. 21)
Place de la Riponne 10
18. **Office de la circulation et du stationnement** (p. 41)
Rue St-Martin 31
19. **Office régional de placement (ORP)** (p. 22)
Place Chauderon 9
20. **Service du contrôle des habitants (CH)** (p. 16)
Rue du Port-Franc 18
21. **Service d'architecture et du logement** (p. 18)
Place Chauderon 9
22. **Service des automobiles et de la navigation (SAN)** (p. 40)
Avenue du Grey 110
23. **Service des écoles et du parascolaire** (p. 25)
Place Chauderon 9
24. **Service des gérances** (p. 18)
Place Chauderon 9
25. **Services industriels de Lausanne (SiL)** (p. 16)
Place Chauderon 23
Place de l'Europe 2
26. **Service social de Lausanne (SSL)** (p. 43)
Place Chauderon 4
27. **Urgences CHUV et Unisanté** (p. 35)
Rue du Bugnon 44

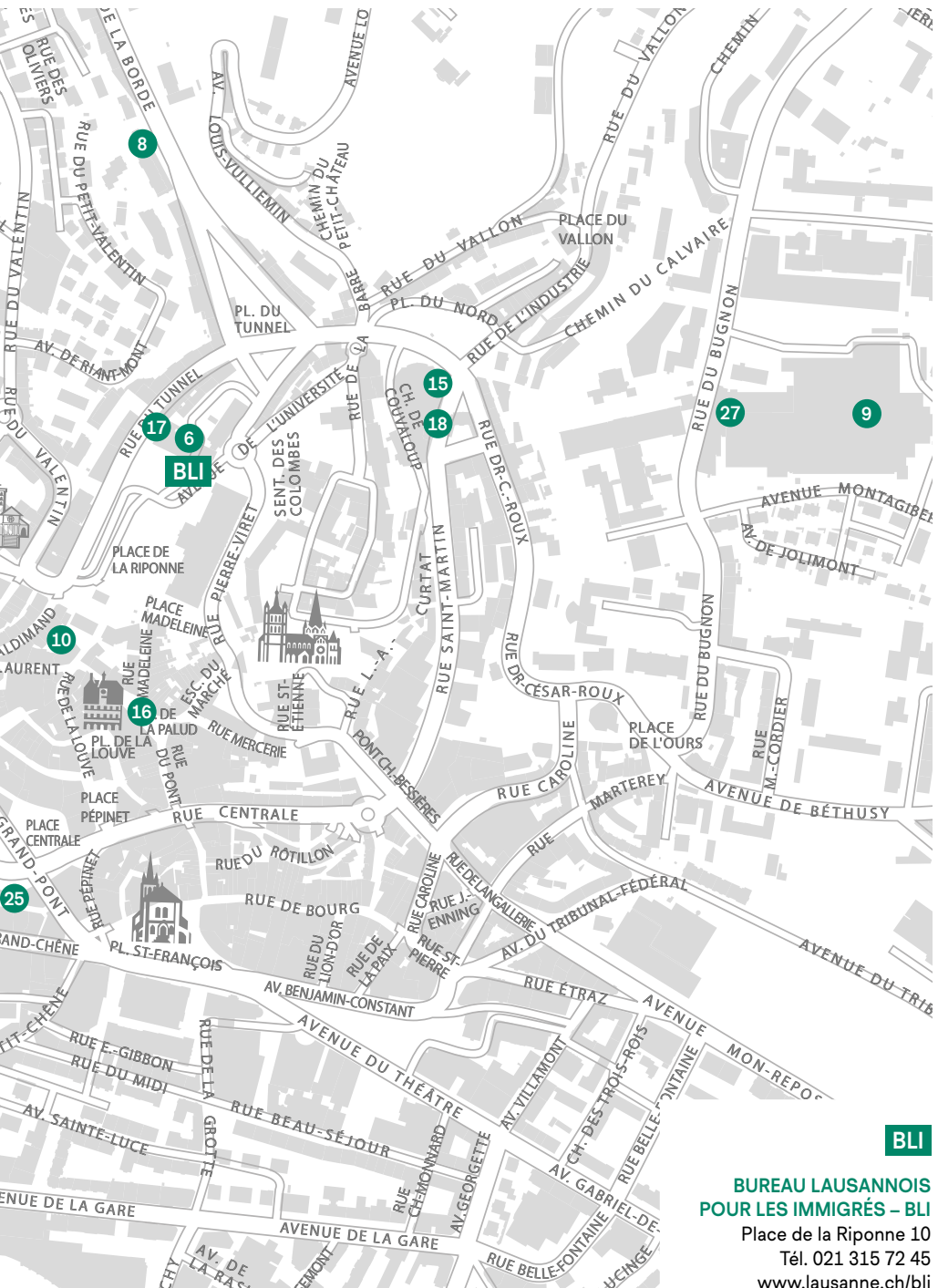
OFF MAP

12 22 14

AT THE SAME ADDRESS

5 19 21
23 24





BLI

**BUREAU LAUSANNOIS
POUR LES IMMIGRÉS – BLI**

Place de la Riponne 10

Tél. 021 315 72 45

www.lausanne.ch/bli

←
MAP INSIDE

Emergency numbers (24/7)

Ambulance: **144**

Police: **117**

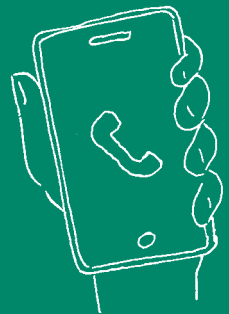
Fire Brigade: **118**

Rega air rescue: **1414**

Duty doctors: **0848 133 133**

La Main tendue (helpline for adults): **143**

Pro Juventute (help for children and young people): **147**



Available in:

Albanais / Shqip

Allemand / Deutsch

Anglais / English

Arabe / العربية

Bosnien-Croate-Serbe /
Bosanski-Hrvatski-Srpski

Espagnol / Español

Farsi / فارسی

Français

Italien / Italiano

Portugais / Português

Russe / Русский язык

Ukrainien / Руди



www.lausanne.ch/bli-vivre-a-lausanne

Bureau lausannois pour les immigrants (BLI)

Place de la Riponne 10
case postale 5032
1002 Lausanne

T +41 21 315 72 45
www.lausanne.ch/bli
bli@lausanne.ch

